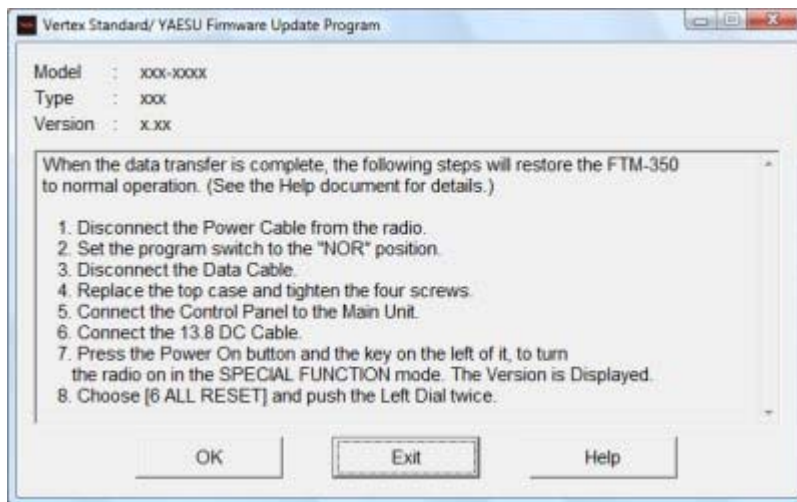


Update

- [1. Starting\(configuring\)](#)
 - [2. Preparation before updating](#)
 - [3. The update progression screen](#)
 - [4. The reassemble and reset procedures](#)
-

4. The reassemble and reset procedures



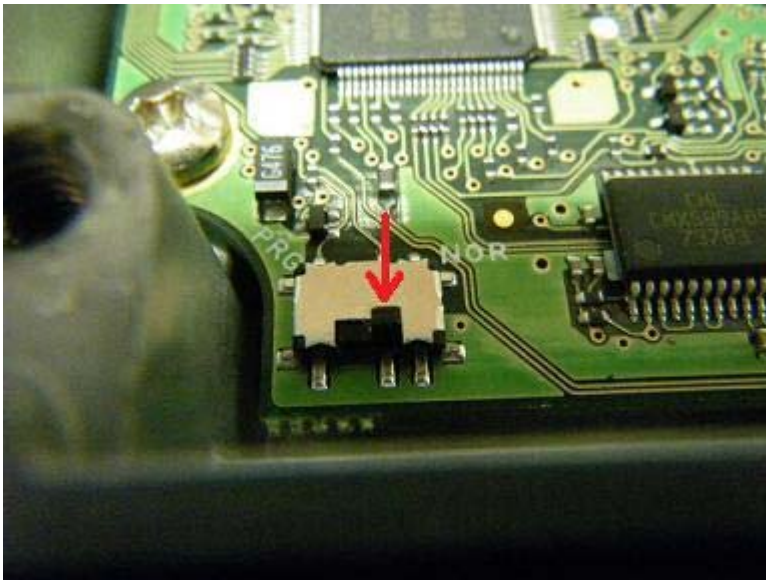
The above screen appears when the update is finished. Perform following procedures, respectively.

(1)Turn the power off



Disconnect the power cable from the FTM-350.

(2)PRG Switch change



Return the program switch to the **NOR** position.

(If you forget to set the program switch to NOR, the transceiver will not operate.)

(3) Remove the data cable



Disconnect the programming cable from the FTM-350.

(4)Reattach the top cover



Connect the 2-pin connector from the speaker to the connector on the MAIN Unit, and then affix the Top Cover to the FTM-350.



Place a screw, with spring washer, into each of the four screw holes in the top cover.



Tighten each of the four screws. (This procedure requires a 3.0mm Hex wrench.)

(5)FTM-350 panel unit connection

Connect the Control Head to the FTM-350 using the supplied connection cable.

(6)Power supply attachment

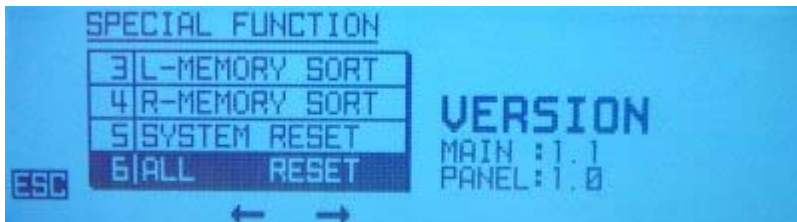


Connect a power cable to the FTM-350, and then apply 13.8V DC power.

(7)Version number check



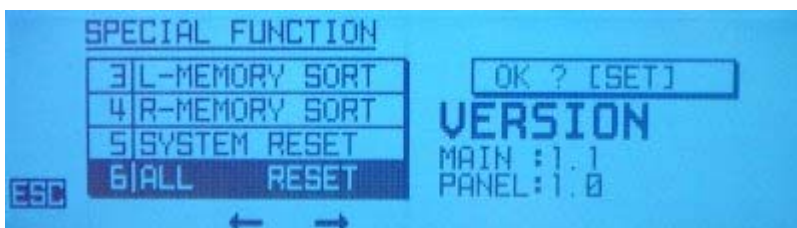
Turn the FTM-350 on while pressing and holding the key, which is located to the left of the power switch.



Please check the Version number displayed.

If the Version number of MAIN is updated, the update procedure is successful.
(The PANEL Version number is not updated.)

(8)ALL RESET



Rotate the left side DIAL knob to select the [6 ALL RESET] item, then press the left side

DIAL knob twice, to perform all reset.

The update procedure is now completed.

Press the [Exit] button on the program screen to close the program screen.

Alternatively, you may return to the [Starting\(configuring\) screen](#) to update another transceiver by pressing the [OK] button.

[Back \(Go to the update progression screen\)](#)