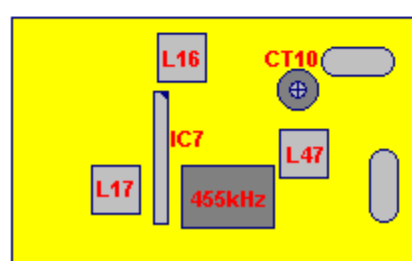
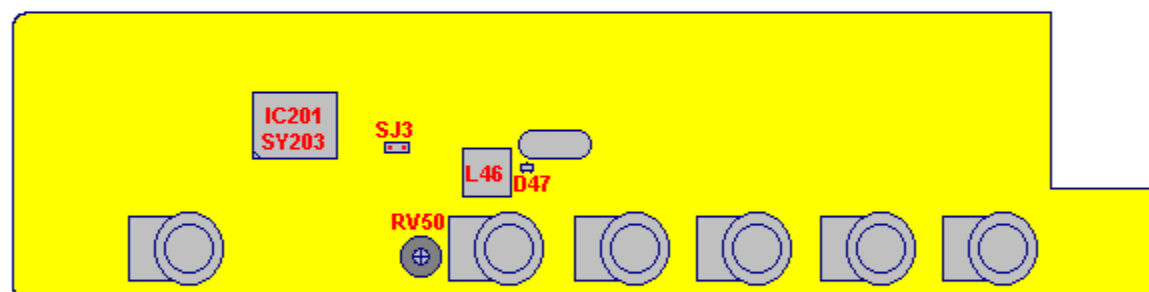
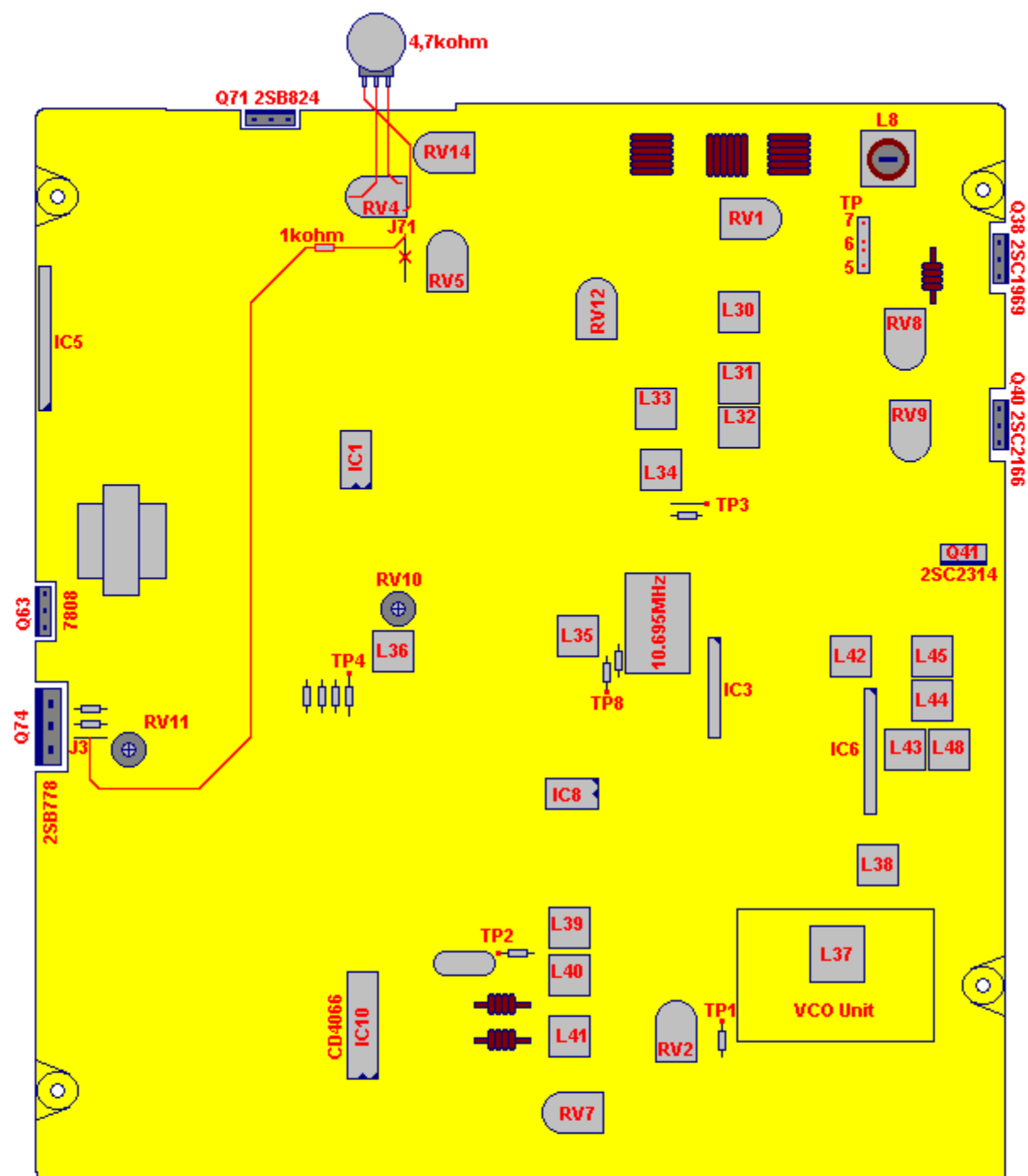


# Dragon SS-497

(INTEK Multicom-497, Albrecht AE497)





To get 400 Channels, insert SJ3.

---

**General programming guidance of LC7232 devices with Seung Yong CPU SYSTEM SY202/SY204.**

The processors SYSTEM 202 (204) with label Seung Yong are customized mask-programmed CPU's on base of the LC 72322 CPU from Sanyo.

Programming are those pin 32, 33, 34 of the CPU.

The indicated bridges must be manufactured from the links indicated in each case to +5 Volt or GND.

---

**RF Power modification**

**Remove J71. Solder a wire width 1kohm resistor from top of J71 to J3. Then re-adjust SSB Power output to 15 Watt.**

**Replace RV4 width 4,7kohm adjustable resistor to get external adjustment of output power for FM and AM**

---

**ALIGNMENT**

Reading Point	Condition	Adjustment	Procedure
<b>PLL</b>	<b>ALIGNMENT PROCEDURE</b>		
TP1		L37	5.1 Volt +/- 50mV on DC VoltMeter
TP3	AM 27.185MHz	L38	Maximum on Oscilloscope
<b>OSCILLATOR</b>	<b>ALIGNMENT PROCEDURE</b>		
TP2	AM 27.185MHz	L39	10.6950MHz on Frequency Counter
TP2	USB 27.185MHz	L40	10.6925MHz on Frequency Counter
TP2	LSB 27.185MHz	L41	10.6975MHz on Frequency Counter
IC201 Pin1		L46	4.500000MHz on Frequency Counter
Q102 Base		CT10	10.240MHz on Frequency Counter
		RV50	TX Frequency Set. (CPU-Board)
<b>RECEIVER</b>	<b>ALIGNMENT PROCEDURE</b>		
TP8	USB 27.185MHz	L30	Maximum on Oscilloscope
TP8	USB 27.185MHz	L31	Maximum on Oscilloscope
TP8	USB 27.185MHz	L32	Maximum on Oscilloscope
TP8	USB 27.185MHz	L33	Maximum on Oscilloscope
TP8	USB 27.185MHz	L34	Maximum on Oscilloscope
TP4	USB 27.185MHz	L35	Maximum on Oscilloscope
TP4	USB 27.185MHz	L36	Maximum on Oscilloscope
IC7 Pin1	FM 27.185MHz	L47	Maximum on Oscilloscope
IC7 Pin1	FM 27.185MHz	L16	Maximum on Oscilloscope
IC7 Pin7	FM 27.185MHz	L17	Maximum on Oscilloscope (FM Discriminator)
<b>TRANSMITTER</b>	<b>ALIGNMENT PROCEDURE</b>		
TP5(+) - TP6(-)	Remove CONN 1	RV9	35mA on DC Amperemeter
TP5(+) - TP7(-)	Remove CONN 1	RV8	85mA on DC Amperemeter
RF Power	TX AM 27.185MHz	L42	Maximum on RF PowerMeter
RF Power	TX AM 27.185MHz	L43	Maximum on RF PowerMeter
RF Power	TX AM 27.185MHz	L44	Maximum on RF PowerMeter
RF Power	TX AM 27.185MHz	L45	Maximum on RF PowerMeter
RF Power	TX AM 27.185MHz	L48	Maximum on RF PowerMeter
RF Power	TX AM 27.185MHz	L8	Maximum on RF PowerMeter
RF Power	TX USB 27.185MHz	RV14	Set RF Power to 16 Watt

RF Power	TX AM 27.185MHz	RV4	Set RF Power to 10 Watt
		RV5	AM Modulation
		RV10	FM Modulation
<b>METER</b>	<b>ALIGNMENT PROCEDURE</b>		
		RV12	S-Meter Set
		RV7	Modulation-Meter Set
		RV1	RF Power-Meter Set
<b>.</b>	<b>ALIGNMENT PROCEDURE</b>		
		RV2	SQ Set
		RV11	13.7 Volt Set

### Frequency extension to 454 Channels

AE 497 can be switched temporarily from frequency mode 28-29.7 MHz into "channel mode". After the conversion, the radio can be used from 25.165 MHz to 29.695 MHz.

It may happen that the transceiver operate with less performance (output and sensitivity) or does even not lock in on all frequencies outside of the specified amateur radio range.

Just press FUNCTION button, then press "2" and hold this key pressed for about 3 seconds. Release button and the unit works on 454 Channels until the radio will be later switched off again. If You have once switched to 454 channels, You can also toggle between channel number and frequency display by pressing FUNCTION + 2, but this only by touching the call button for short time.