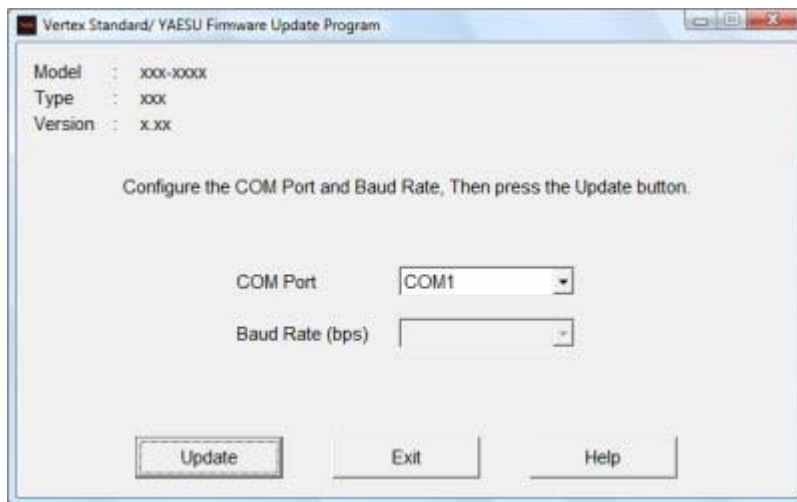


Update

- [1. Starting\(configuring\)](#)
 - [2. Preparation before updating](#)
 - [3. The update progression screen](#)
 - [4. The reassemble and reset procedures](#)
-

1. Starting(configuring)



When an update program is executed, the above screen will appear. Set up the following items respectively.

(a)Check the model and the destination (Type)

Confirm **the model** and **the destination(Type)** of your transceiver before writing the firmware.

(CAUTION)

Be sure to confirm the model and the destination (Type) of your transceiver before writing firmware to it. Writing incorrect firmware to the transceiver may cause abnormal operation or failure.

(b)Com port setting

Select the correct PC COM port number to communicate with the FTM-350.

(c)Baud Rate(bps) setting

Set the Computer transmission baud rate of the firmware data.
(In the case of the FTM-350, it is set up automatically.)

(d)Update start

When the above (a)(b)(c) settings are complete, press the [Update] button to advance to the next screen.

Or, press the [Exit] button to exit the program without updating.

[Next \(Go to the next step\)](#)