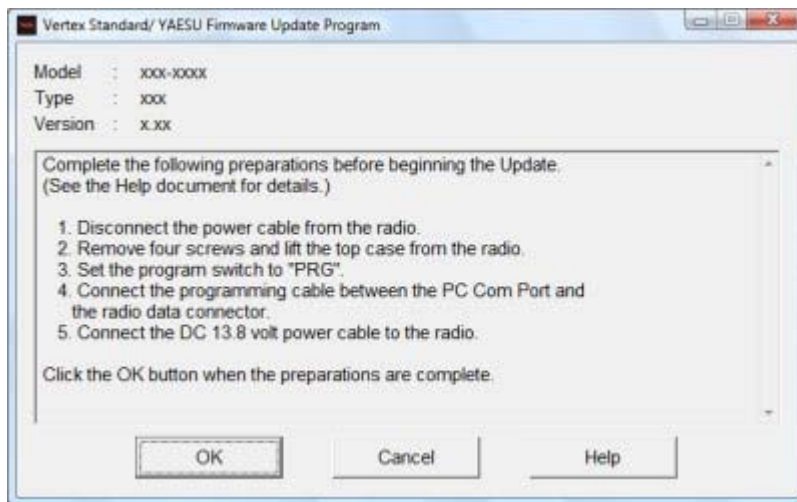


Update

- [1. Starting\(configuring\)](#)
 - [2. Preparation before updating](#)
 - [3. The update progression screen](#)
 - [4. The reassemble and reset procedures](#)
-

2. Preparation before updating



When the [Update] button is pressed, the above screen will appear listing the preparations required before the update can be started.

(1)Turn the Power Off.



Turn The Power Switch OFF and remove the power cable from the FTM-350.

(2)Remove the Top Cover.



To remove the FTM-350 top cover, remove the four screws.
(A 3.0 mm Hex wrench is required.)



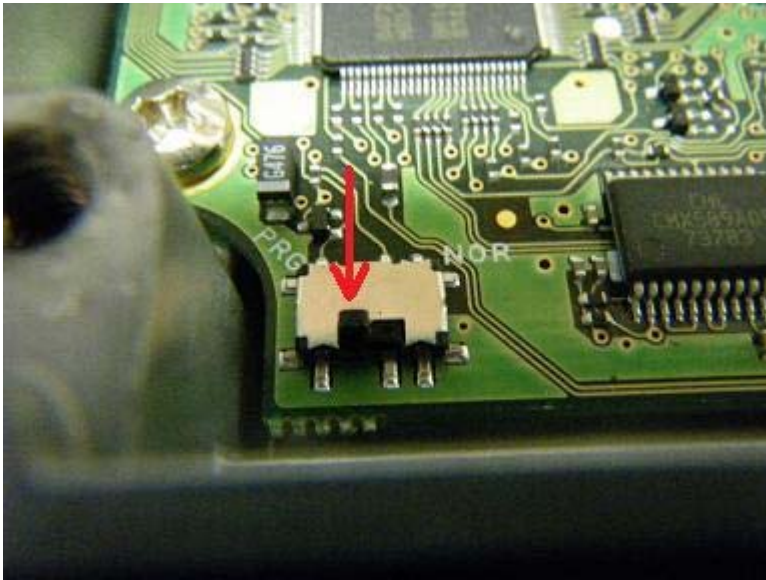
Be careful; do not lose the four spring washers that are used with the four screws.



Carefully lift and move the FTM-350 Top Cover to access the Program Switch.
Do not damage the speaker cable.

(3)PRG Switch change



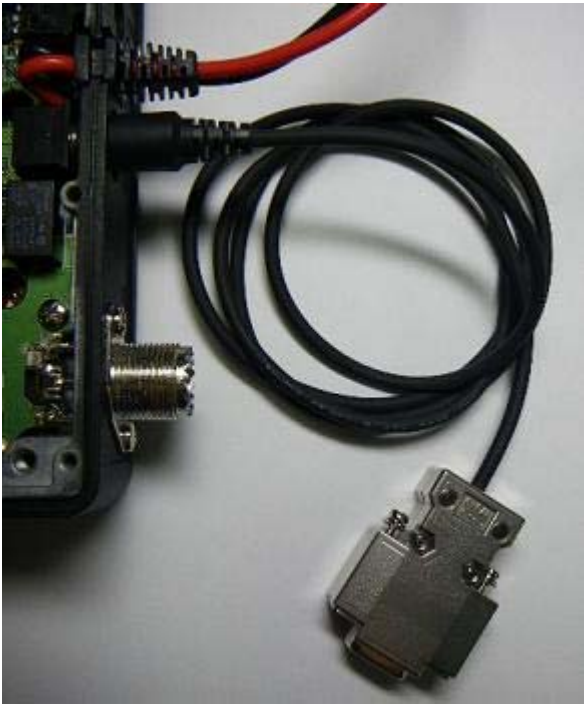


Locate the program switch at the front left side on the Main Unit.
Set this switch to the **PRG** position.

(4)Data cable connection



Connect the CT-140 or CT-142 programming cable to the DATA jack (Mini-DIN connector) on the back panel of the FTM-350.



Connect the opposite end (DSUB 9pin connector) of the programming cable to the COM Port of the PC. (The CT-142 cable is shown)

(5)Power supply connection



Connect the 13.8V DC power cable to the FTM-350.

When the above preparations are completed, click the [OK] button to advance to the next screen.

[Next \(Go to the Update progression Screen\)](#)

[Back \(Return to the Starting\(configuring\) Screen\)](#)