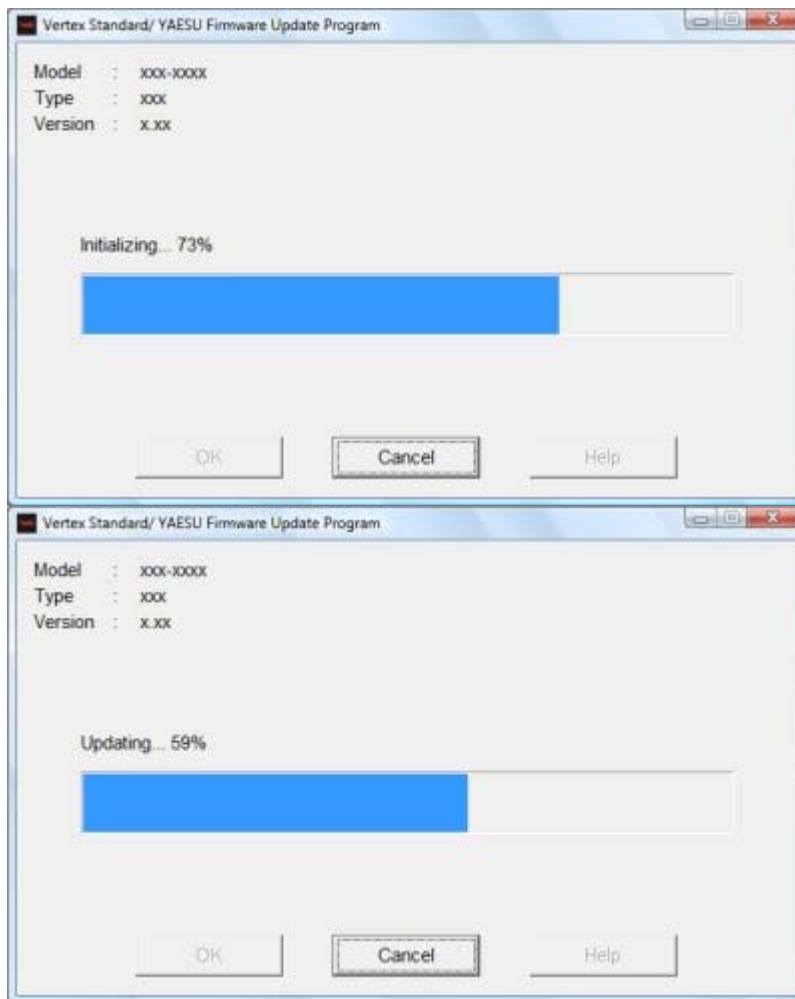


# Update

---

- [1. Starting\(configuring\)](#)
  - [2. Preparation before updating](#)
  - [3. The update progression screen](#)
  - [4. The reassemble and reset procedures](#)
- 

## 3. The update progression screen

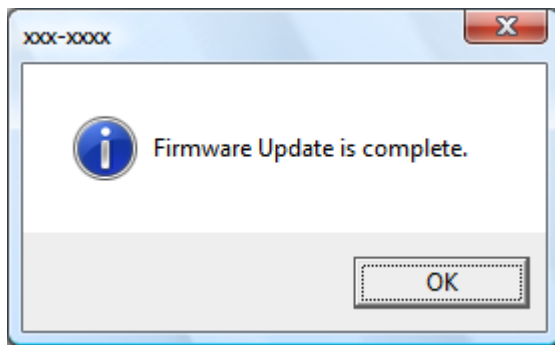


When the [OK] button is pressed, the initialization sequence completes and then the firmware is updated. Wait until the updating is complete.(It takes approximately **4 minutes.**)

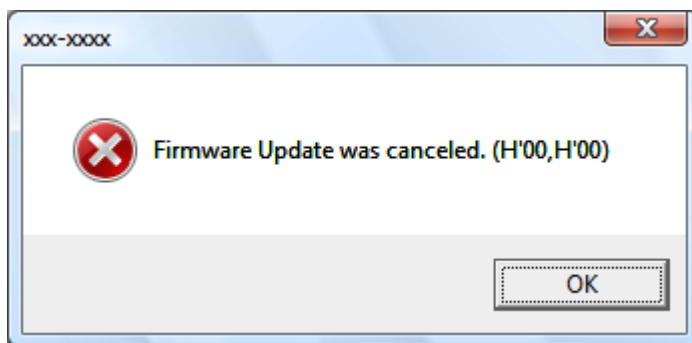
### **(CAUTION)**

**Do not turn off the power supply or the computer during the update process. If the update is interrupted, the transceiver may not work normally.**

When the update processing is completed, the below popup screen will appear. Press the [OK] button.



If the update process is canceled or is not completed for any reason, the below popup screen will appear.



When this screen is displayed, repeat the update procedure [from the beginning](#).

[Next \(Go to the next step\)](#)

[Back \(Return to the preparation procedure\)](#)