

**ASSEMBLY**  
*and*  
**OPERATING**  
**MANUAL**  
*for*



**P A C O**

**VACUUM TUBE**  
**VOLTMETER KIT**  
**Model V-70**

**P A C O ELECTRONICS CO., INC.**

A DIVISION OF ***PRECISION*** APPARATUS CO., INC. 70-31 84th STREET, GLENDALE 27, L. I., N. Y.



## SPECIFICATIONS

### DC VOLTMETER, ELECTRONIC:

7 Ranges	0-1.5, 5, 15, 50, 150, 500, 1500 volts full scale
Input Resistance	11 Megohms (1 Megohm in probe).
Sensitivity	7 1/3 Megohms-per-volt on 1.5 volt range.
Circuit	Balanced bridge using twin triode.
Accuracy	±3% full scale.

### AC VOLTMETER, ELECTRONIC:

7 Ranges (R.M.S.)	0-1.5, 5, 15, 50, 150, 500, 1500 volts full scale.
7 Ranges (Peak-to-peak)	0-4, 14, 40, 140, 400, 1400, 4000 volts
Frequency Response (5V Range)	±1 db 40 CPS to 4 MC (600 ohms source).
Accuracy	±5% full scale.
DB Scale	-6 to +16db, +4 to +26db, +14 to +36db, +24 to +46db, +34 to +56db, +44 to +66db (0.775 volts into 600 ohm line on 0-5 volts AC scale = 0db).

### OHMMETER, ELECTRONIC:

7 Ranges	0-1000 (x1), 10,000 (x10), 100,000 (x100), 1 meg (x1000), 10 meg (x10K), 100 meg (x100K), 1000 meg (x1 meg). 10 ohms center scale on Rx1.
----------	---

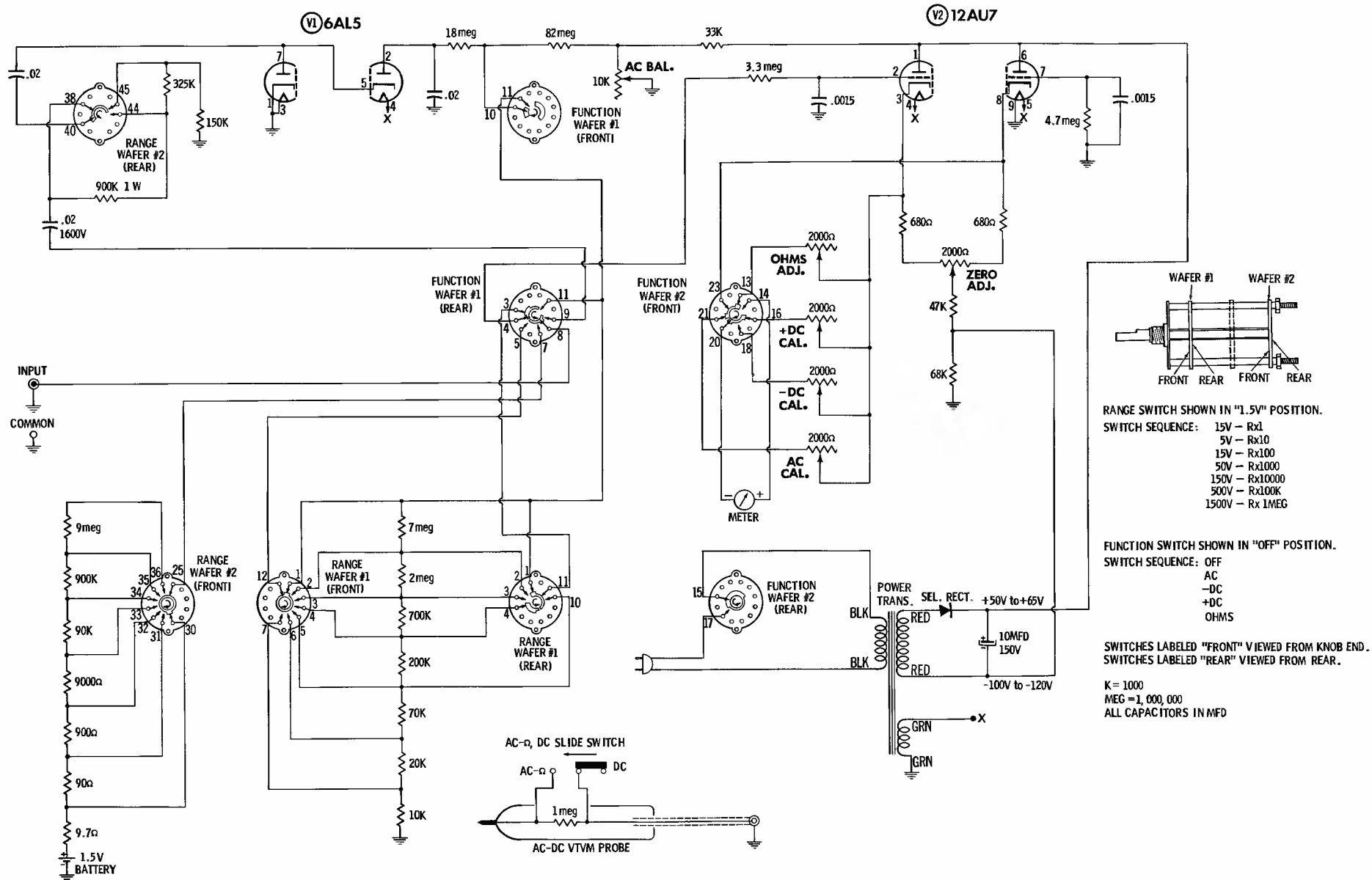
METER . . . . . 4 1/2" 400  $\mu$ A movement, clear plastic case

MULTIPLIERS . . . . . 1% precision type.

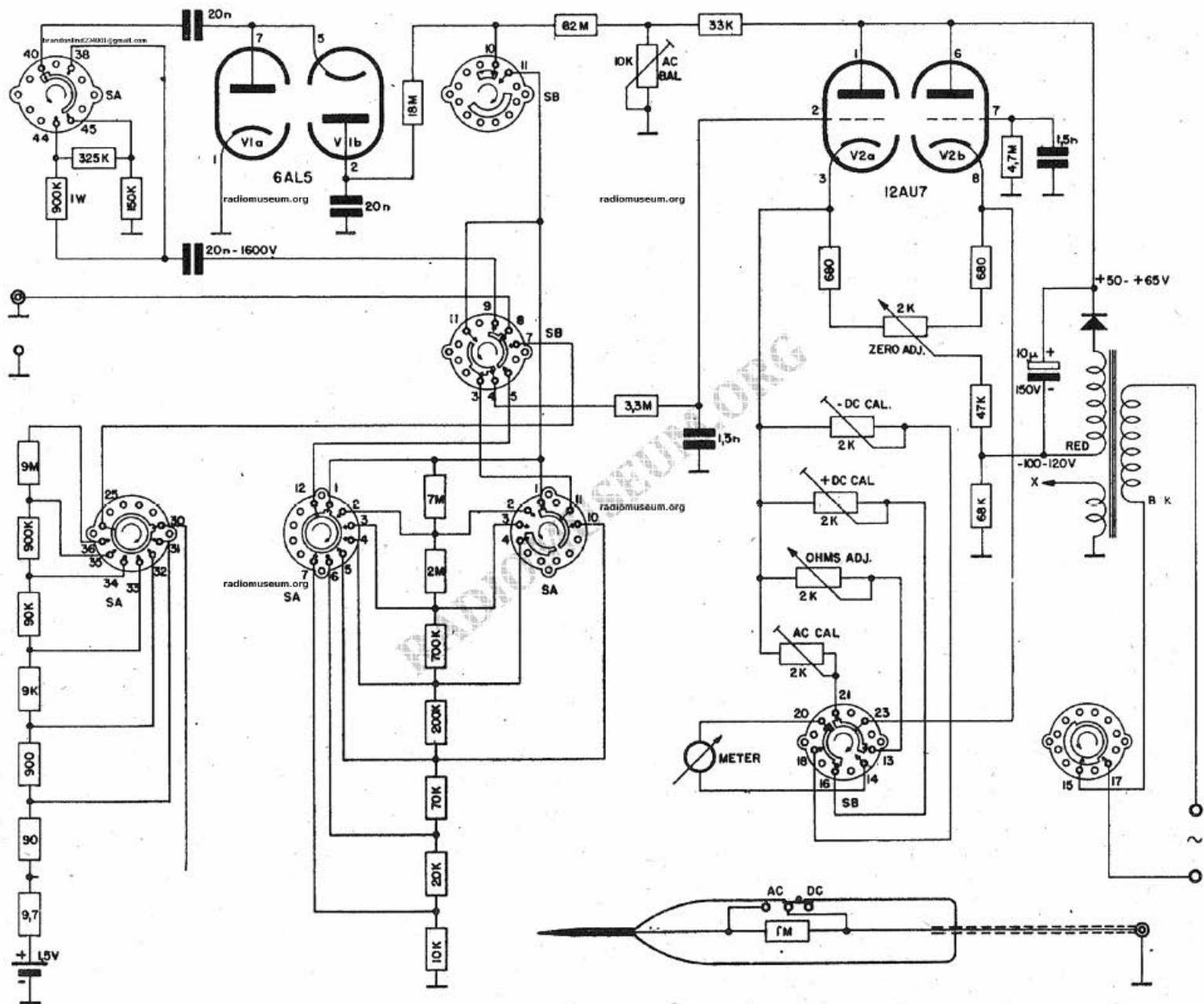
TUBES . . . . . 12AU7, twin triode bridge, 6AL5, twin diode, peak-to-peak rectifier.

BATTERY . . . . . 1.5 volt flashlight cell.

POWER REQUIREMENTS . . . . . 105-125 volts 50-60 cycle AC



Schematic Diagram — Paco Model V-70 VTVM



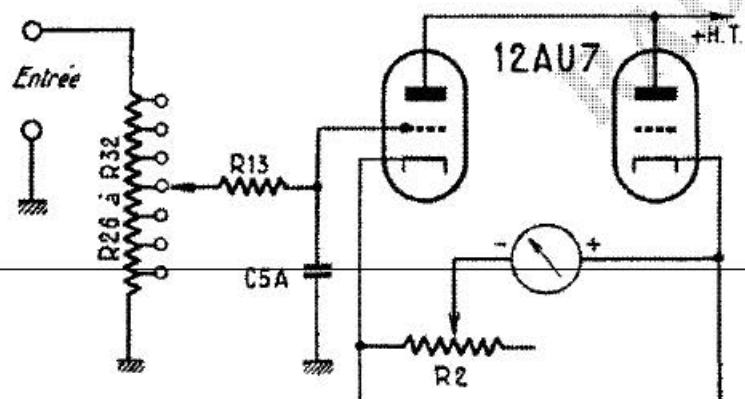
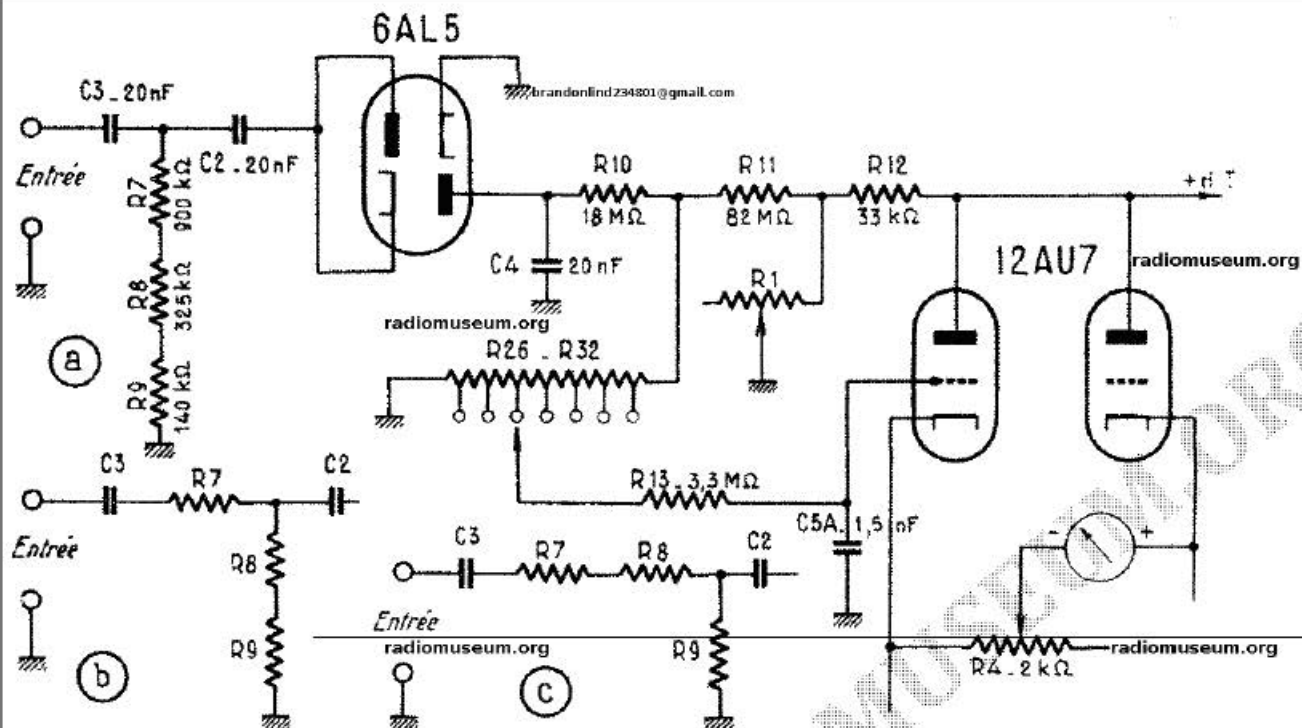


Fig. 2 (ci-dessus). Schéma du voltmètre commuté pour la mesure des tensions alternatives.

Fig. 3 (à gauche). Ce que cela devient pour la mesure des tensions continues.

Fig. 4 (à droite). Montage réalisé pour la mesure des résistances.

