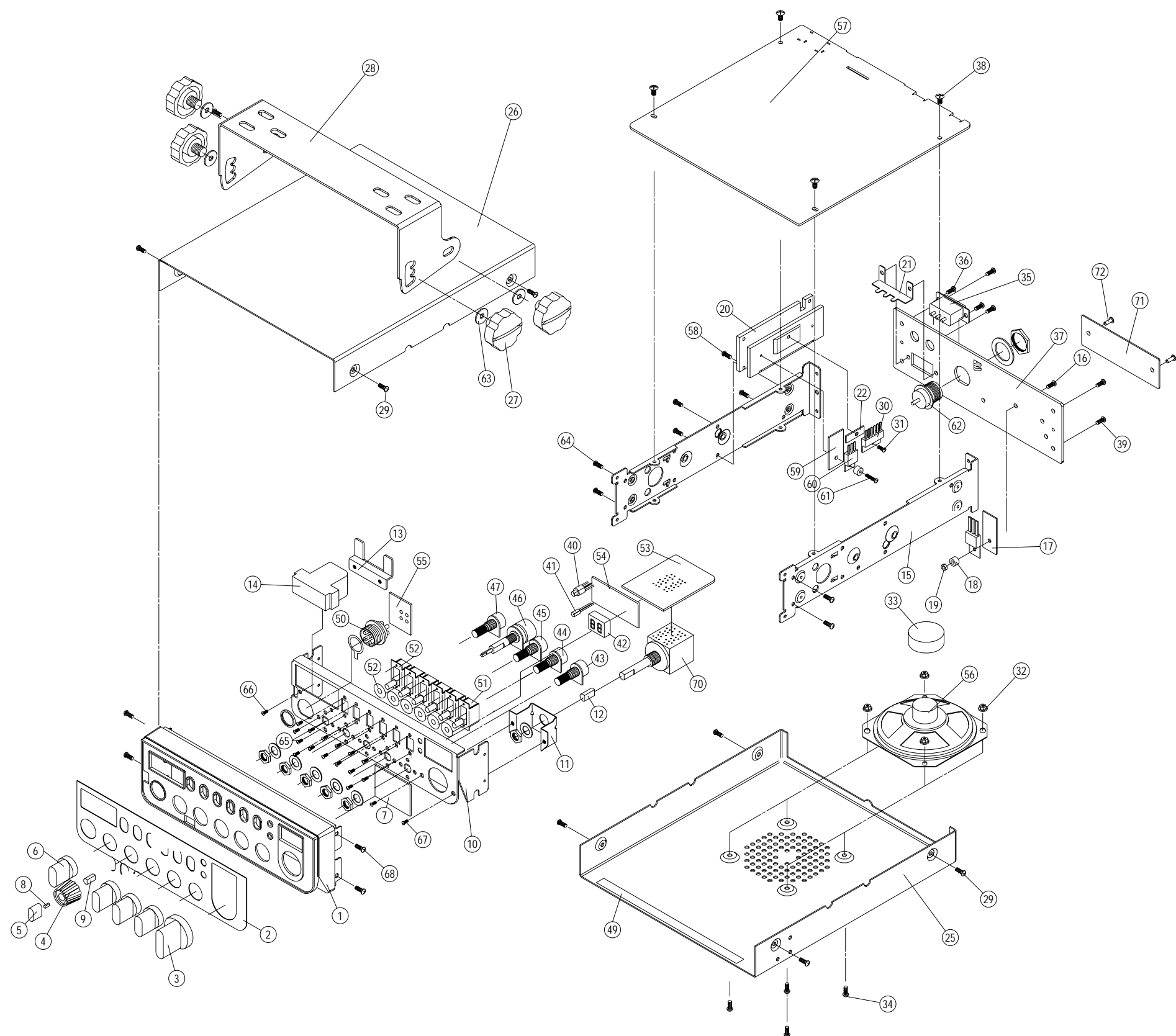


TR-127DX EXPLODE DRAWING



TR-127DX MECHANICAL PART

NO.	PART NO.	DESCRIPTION	QTY
1	PT240N010A	FRONT PANEL (CHROME)	1
2	BT240N020F	ID PLATE TR-127	1
3	PT2400020C	KNOB A (CHROME)	1
4	PT2400040C	KNOB C (CHROME)	1
5	PT2400050C	KNOB D (CHROME)	1
6	PT2400030C	KNOB B (CHROME)	4
7	PTDX55020A	DISPLAY WINDOW (AMBER)	1
8	MT3600100T	D SPRING D #8500	1
9	MT3600090T	D SPRING B #7800	1
10	MT240N010X	FRONT CHASSIS	1
11	MT3600042X	CH SWITCH BRACKET	1
12	MT3600080T	D SPRING A #6600	1
13	MT240N030X	METER BRACKET	1
14	EX03N40016	SWR METER	1
15	MT1200031X	SIDE BRACKET	2
16	JS052012MN	SCREW M2X12	1
17	XZZZ90020Z	INSULATING PLATE 18*13 MM	1
18	XZZZ90003Z	INSULATING RING	2
19	JN242012ZS	NUT M2	1
20	MT1200121X	HEATSINK	1
21	MT3600050X	DC SOCKET BRACKET	1
22	LZZZ61008Z	IC SHIELD B	1
23	MT240N060X	SHIELD HOUSING (EL)	0
24	EPT91V130Z	EL DRIVE PCB	0
25	MT1200021K	BOTTOM HOUSING	1
26	MT1200011K	TOP HOUSING	1
27	XZZZ90007Z	MOUNTING SCREW	4
28	MT1200090A	MOUNTING BRACKET	1
29	JS053006MN	SCREW M3X6	8
30	ENTA07222P	TA7222AP	1
31	JS013006MV	SCREW M3X6	1
32	JN263035ZS	NUT M3	4
33	QT7799010A	RUBBER COVER	1
34	JS053008MB	SCREW M3X8	4
35	EX06T40007	DC SOCKET	1
36	JS053006MN	SCREW M3X6	2
37	MT1200110M	BACK PLATE	1
38	JS053006MN	SCREW M3X6	4
39	JS052606MN	SCREW M2.6X6	4
40	EX01N40004	LED RED/GREEN 3 MM	1
41	EX01N40133	LED RED 3 MM	1
42	EX03N40016	LED DISPLAY GREEN	1
43	RV20303575	VR 20 KB (CLARIFY)	1
44	RV50203574	VR 5 KB (SWR CAL)	1
45	RV10203584	VR 1 KB (RF GAIN)	1
46	RV50303602	VR 50KB/50KA/SW (VOL/SQ)	1
47	RV10203573	VR 1KA (MIC GAIN)	1
48	MT240N020X	SCREW 支架	1
49	LZZZ60001Z	SHIELD CLOTH	2
50	EX06N41020	MIC SOCKET 4 P	1
51	EWSL31026K	SLIDE SWITCH 2 N	5
52	EWSL31027K	SLIDE SWITCH 3 N	1
53	EPT012920Z	ROTARY SWITCH PCB	1
54	EPT012930Z	DISPLAY PCB	1
55	EPT012950Z	MIC PCB	1
56	ES300835SQ	SPEAKER 8 OHM 3 W 3.5 INCH	1
57	EPT012910Z	MAIN PCB	1
58	JS052606MN	SCREW M2.6X6	4
59	XZZZ90064Z	INSULATING PLATE 13*18*0.15 MM	1
60	T2SD00880Y	TR 2SD880Y	1
61	JS052012MN	SCREW M2X12	1
62	EX06T41019	ANT SOCKET	1
63	XZZZ90188Z	FIBER WASHER 4.9*15*1.0T	1
64	JS053006MN	SCREW M3X6	4
65	JS052604MN	SCREW M2.6X4	12
66	JS053006MN	SCREW M3X6	2
67	JS053006MN	SCREW M3X6	2
68	JS033006MN	SCREW M3X6	4
69	XZZZ90296A	MASK PLATE (SW) ? 20MM	6
70	EWRT32059Z	ROTARY SWITCH GPS-0668	1
71	BT240N030F	FCC PLATE TR-127	1
72	JF413206ZX	BLIND RIVET 3.2x6mm	2